

**State of Wyoming Corner Record**

(In compliance with the *CORNER PERPETUATION AND FILING ACT*, Wyoming Statutes, 1977, Section 36-11-101, et, seq., and the Rules and Regulations of the Board of Registration for Professional Engineers and Professional Land Surveyors)

Reverse side of this form may be used if more space is needed.

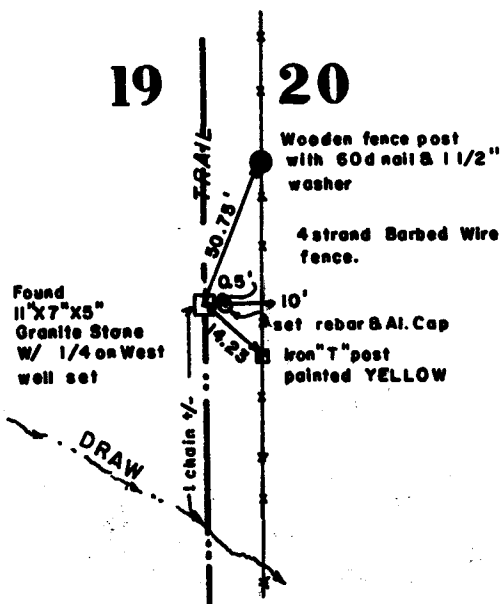
Record of original survey and citation of source of historical information (if corner is lost or obliterated). Description of corner monumentation evidence found and/or monument and accessories established to perpetuate the location of this corner. Sketch of relative location of monument, accessories, and reference points with course and distance to adjacent corner(s) (if determined in this survey). Method and rationale for reestablishment of lost or obliterated corner.

GLO Notes call for a dry draw 39 chains, 40 chains to 1/4 set 17"x11"x4" limestone.

Found a granite stone 11"x7"x5" well marked with a 1/4 on the West and well set, set 1/2" rebar with an aluminum cap as a witness corner 0.5 feet East of stone.

Marked W C  
19+20  
1/4

**T.15 N., R.67 W.**



154572  
RECEIVING  
LARAMIE COUNTY CLERK  
CHEYENNE, WY  
1994 DEC -1 PM 3:48

Date of Field Work: 23 November A.D. 1994 Office Reference: T00288-56-58

**CROSS INDEX DIAGRAM**

Firm/Agency, Address

Terrestrial Surveying & Mapping Co.  
1127 Terry Ranch Road  
Cheyenne, Wyoming 82007

Telephone Number: 634-9360

This corner record was prepared by me  
or under my direction and  
supervision.

SEAL & SIGNATURE



	1	2	3	4	5	6	7	8	9	10	11	12	13	14	15	16	17	18	19	20	21	22	23	24	25		
A																											A
B																											B
C	6																									C	
D																										D	
E																										E	
F																										F	
G	7																									G	
H																										H	
J																										J	
K																										K	
L	18																									L	
M																										M	
N																										N	
O																										O	
P	19	*	20																							P	
Q																										Q	
R																										R	
S																										S	
T	30																									T	
U																										U	
V																										V	
W																										W	
X	31																									X	
Y																										Y	
Z																										Z	
	1	2	3	4	5	6	7	8	9	10	11	12	13	14	15	16	17	18	19	20	21	22	23	24	25		

Corner Name: W1/4 Section: 20 T15N R67W : 6TH P.M. Cross-Index No.: P-5